

Returner

A long-awaited system is here

Requirement of source sorting

Returner has been developed in view of requirements for household sorting requirements as well as the desire for a property close collection where producers will ultimately take care of their return packaging.

User - and environmentally adapted

Returner replaces recycling stations. Returner is divided into six plus two compartments for household waste collection (non organic material) The doors can be locked at scheduled hours to reduce disturbances in residential areas.

Returner in the housing environment

The Returner is placed in residential neighborhoods so that residents get close to leaving their source-sorted material. A Real Property Close Collection System (CCS)

Function and Automatic

The emptying technique means emptying tray by tray in normal tilting movements with automatic opening of compartment separators. Without leaving the cabin, the driver directs the sorted contents of point. The emptying is controlled via the smartphone and the discharge data is uploaded via our control system. Through a monitoring center, the operator also sees whether a "recycling station" needs to be emptied off schedule. With IT, this system becomes really intelligent !

A single transport can handle everything

Since Returner receives all source-sorted materials in a single container, one transport point is required - environmentally friendly and reduced traffic risk in residential areas.

The system collects:

Coloured glass - Clear glass - Plastic packaging - Newspapers - Corrugated board - Metal - Batteries

System IT:

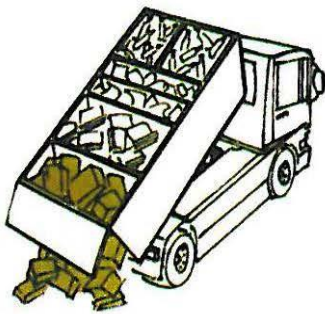
Measures the degree of fill distance, heat change, weight and fraction, data available via the Internet.



This is how it works



When emptying, the different fractions are automatically opened in turn, using a patented system



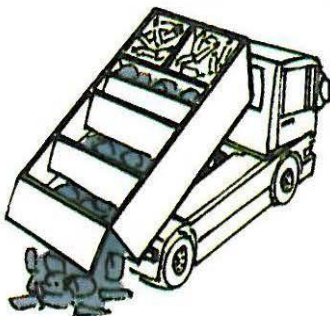
Corrugated/Cardboard



Newspapers



Metal



Plastic



Clear glass



Coloured glass

